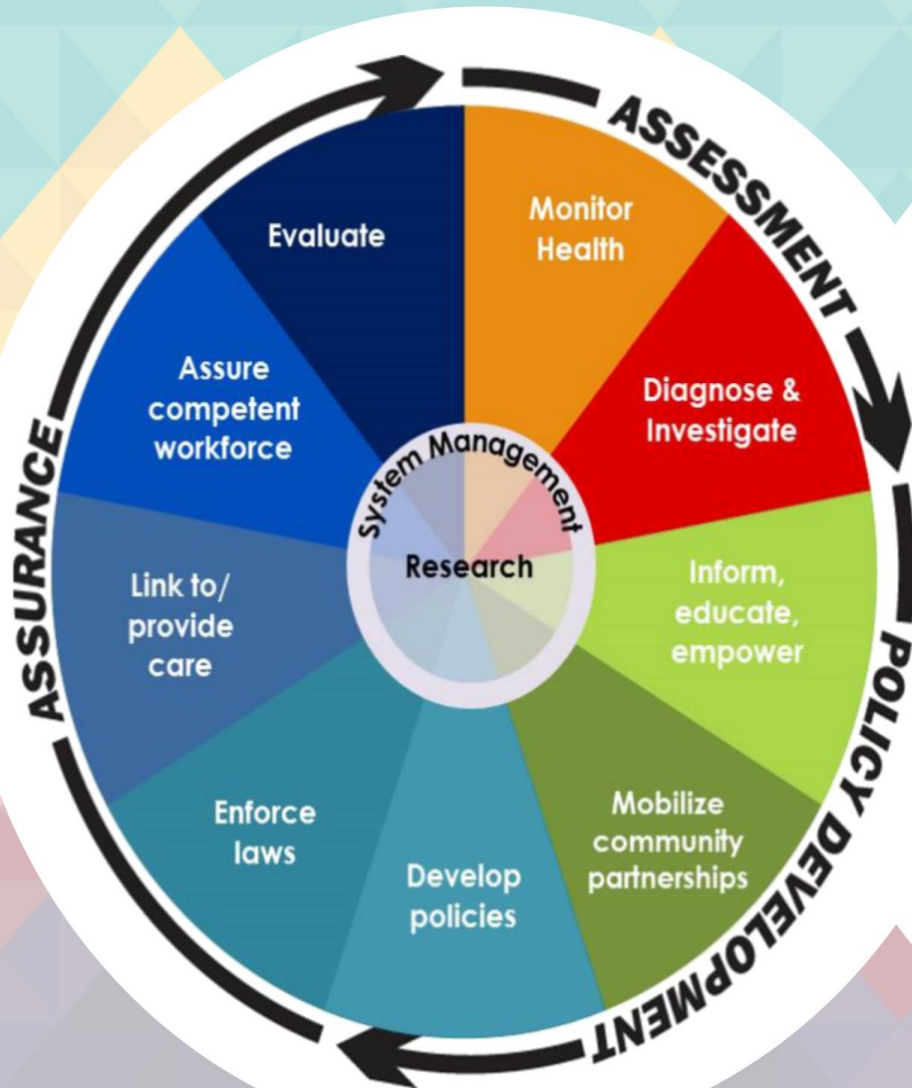


# 10 ESSENTIAL PUBLIC HEALTH SERVICES



## Assessment

- 1 Monitor environmental and health status to identify and solve community environmental public health problems
- 2 Diagnose and investigate environmental public health problems and health hazards in the community

## Policy Development

- 3 Inform, educate and empower people about environmental public health issues
- 4 Mobilize community partnerships and actions to identify and solve environmental health problems
- 5 Develop policies and plans that support individuals and community environmental public health efforts

## Assurance

- 6 Enforce laws and regulations that protect environmental public health and ensure safety.
- 7 Link people to needed environmental public health services and assure the provision of environmental public health services when otherwise unavailable.
- 8 Assure a competent environmental public health workforce
- 9 Evaluate effectiveness, accessibility, and quality of personal and population-based environmental public health services
- 10 Research for new insights and innovative solutions to environmental public health problems